



CHINESE HOSPITAL

Caring for the Community for the Next 100 Years

繼往開來，關懷服務社區新百年

What's Next 下一個里程碑



Contents 內容

Message from CEO Jian Zhang
行政總裁寄語.....1

Chinese Hospital Increases
Accessibility and Convenience to
the Community 東華醫院為社區帶
來更方便及貼心的服務.....3

Department Spotlight:
Cardiopulmonary Unit
部門聚焦：心肺治療部..... 5

Chinese Hospital Auxiliary 50th
Annual Gala Raising \$22,500
東華醫院輔助會五十週年聯歡晚會，
籌得善款二萬二千五百元.....6

Our Efforts to Improve Community
Health and Wellness 努力建設健康
的社區.....7

Congratulations to Jade Health
Care Medical Group on its 1st
Anniversary! 恭賀「翡翠東華醫師
協會」成立一週年！..... 8

Reserve a Phoenix Tile Today!
立即認購火鳳凰慈善磚！.....9

2017 Radiothon Highlights
「愛心獻東華」電台籌款回顧.....9

1979 Building Renovation Project
東華醫院 1979 大樓翻新工程....10

Donor List from August 2016 to
July 2017 善長仁翁芳名錄.....11

Message from the Chief Executive Officer Jian Zhang 行政總裁寄語

Dear Chinese Hospital Supporters,

Thank you so much for your continuous support for Chinese Hospital! Having served at Chinese Hospital for 25 years, I truly understand the importance of Chinese Hospital to our community. To me and I hope to all of you as well, Chinese Hospital is not just a hospital, it is the landmark of Chinatown and the cultural heritage of the Chinese Community.



Over 100 years ago, the overseas Chinese traveled thousands of miles to San Francisco to help build the railroads; however, when they became ill, they were rejected by the mainstream healthcare facilities. These overseas Chinese overcame countless hurdles, pulled together every resource they could possibly obtain in order to build Chinese Hospital in 1925 so they could have access to health care. Today, Chinese are outstanding in many fields such as political circles, business, technology and academia. We have every reason to carry forward Chinese Hospital, a legacy handed down to us from our ancestors and to make it even better. With your continual support, a new modern hospital with state-of-the-art medical technology was built and opened in October 2016. Our patients and their families are so thankful to all of you!

Health care is evolving rapidly, practice and reimbursement models are changing quickly, and President Trump's health reform brings more uncertainty to the already challenging healthcare environment. Chinese Hospital new leadership team and Medical Staff will continue to create innovative programs to meet the health care needs of our community.

In order to better serve our community, Chinese Hospital has decided to renovate the 1979 building to provide outpatient services including Same Day Surgery Center, GI Lab, Infusion Center for chemotherapy and blood transfusion, Clinical Laboratory, Multispecialty Clinic, as well as Dietary. All your donations moving forward will be designated to this much-needed project. If you have any questions or suggestions, please contact Lily Cun, Fund Development Manager, at 1-415-677-2470.

Again, I would like to express my sincere appreciation to you for supporting Chinese Hospital! Chinese Hospital is here to provide safe, effective, patient-centered, timely, efficient, and equitable care to our community. Together, I am confident that we can make our community a healthy one!

Respectfully,

Jian Zhang, DNP, MS, FNP-BC
Chief Executive Officer, Chinese Hospital

敬愛的各位支持東華醫院之善長仁翁：

感謝閣下一如既往地支持東華醫院！業經服務東華醫院廿五年，本人深明東華醫院對於我們社區之重要性。對於本人，亦希望對於閣下，東華醫院不單只是一家醫院，更是華埠的地標及我們華人社區的文化遺產。

百多年前，先僑不遠萬里，來到金山，幫助修築美國中央橫貫鐵路；但是，當他們患病之時，卻被主流醫院拒之門外。先賢克服萬難，戮力同心，傾其所有，卒告成功，使東華醫院創建於1925年，遂令華僑民眾得以享受到醫療服務。今日，華人在諸多領域，比如政界、商界、科技及文教等方面，均出類拔萃。我們沒有理由不把東華醫院諸位前賢之優良傳統繼承下來，並發揚光大。因著閣下持續支持，擁有最先進醫療技術的新醫務大樓已經落成，並於2016年10月順利開張。我們的病人及其家屬，皆對閣下感激不盡！

醫療行業正在迅速演進，行醫模式及償付模式日新月異，並且川普總統的醫療改革更給本來已經充滿挑戰性的醫療環境增添了不確定性。東華醫院新領導層團隊及醫療人員，與時俱進，將繼續發展創新型計劃，以滿足我們社區的醫療服務需要。



为了更好地服務我們的社區，東華醫院已經決定翻新1979年舊大樓，以提供門診服務，包括同一天動手術服務、婦女健康中心、專為癌症病人化療而設的輸血及捐血中心、臨床試驗室、多種專科門診、及營養膳食服務等。閣下

捐款的每一分、每一毫都將用在1979年舊大樓翻新之急需項目的用途之上。如果閣下有任何問題或建議，請致電 1-415-677-2470，與基金發展部主任 Lily Cun 聯絡。

在此，我再次為閣下多年來對東華醫院的支持和贊助表示最誠摯的謝意！東華醫院扎根華人社區，一如既往地為大家提供安全、有效、以病人為中心、及時、可負擔、及平等的醫療護理服務。眾志成城，我滿懷信心：團結一致，我們能夠改善我們社區的健康狀況！

謹啟，

張建清博士
東華醫院行政總裁

President

James K. Ho 何國杰院長
Chinese Democratic Constitutionalist Party 民憲黨

Vice President

Harvey Louie 雷頌文副院長
Chinatown Y.M.C.A. 華埠男青年會

English Secretary

Thomas T. Ng 伍璇燦
Chinese Consolidated Benevolent Association
中華總會館

Assistant English Secretary

Kin F. Yee, DDS 余健峰醫生
Hop Wo Benevolent Association
合和總會館

Chinese Secretary

Jack Sit 薛曹績
Kong Chow Benevolent Association 岡州總會館

Assistant Chinese Secretary

Jack Lee Fong 方創傑
Sue Hing Benevolent Association 肇慶總會館

Treasurer

Mel Lee 李焯宗
Ning Yung Benevolent Association 寧陽總會館

Board Members

Edward Y. C. Chan, MD 陳耀祥醫生
Chinese Hospital Medical Staff 東華醫院醫生團

Kitman Chan 陳傑民
Chinese Chamber of Commerce 中華總商會

Paul M. Lee 李文波
Yeong Wo Association 陽和總會館

George Lew 劉梓揚
Chee King Tong 致公堂

Tim Siow 蕭挺
Yan Wo Benevolent Association 人和總會館

Siu Kong Tam 譚韶剛
Sam Yup Benevolent Association 三邑總會館

Yick C. Tam 譚益才
Kuomintang of China 國民黨

Dick W. Wong 劉紹榮
Chinese Christian Union of San Francisco
三藩市基督教聯會

Robert Wong 黃國康
Chinese American Citizens Alliance 同源總會

CEO 行政總裁

Jian Zhang, DNP, MS, FNP-BC 張建清博士

Chief of Medical Staff 醫生團團長

William S. Chung, MD 莊銘惠醫生

Newsletter Staff 簡訊編輯委員會

YoungSoo Cho - Editor 編輯

Amy Wu - Designer 排版設計

Jenni Lau, Benjamin Chen,
Frank Liu - Translation 翻譯

Jian Zhang, YoungSoo Cho, Elena Wong,
Carolyn Gan, Jiami Wu, Jenni Lau, Lily Cun,
Jessica Chen - Contributors 供稿者

Chinese Hospital Increases Accessibility and Convenience to the Community



Support Health Services

It has been over a year since Chinese Hospital's New Patient Tower opened to the public. Since then, many patients have had the chance to experience the wonderful new facility and the brand new state-of-the-art equipment to better treat patients and help them to heal quickly.

But, there is a lot more happening at Chinese Hospital to make things convenient for the community. Support Health Services—which was located on Pacific Avenue—has moved to the New Patient Tower, next to the Emergency Department on level B1.

We have also expanded the services offered at Support Health. It has always provided a comfortable place to get extra help with chronic conditions like diabetes or Hepatitis B counseling and Immunizations among others. Support Health is now also a primary care clinic. This enables CCHP Health Plan members and other patients a new modern facility where they can get their check-ups, tests and related services in one convenient place.

Another move for the community's convenience are CCHP Member Services and Sales Departments. They too were at Pacific Avenue during the past few years while the New Patient Tower was under construction. They can now be found at the lobby of the hospital and they can help with the community's health plan and insurance coverage needs. CCHP offers high-quality, affordable coverage to individuals, families, businesses of all sizes, and Medicare for eligible residents. Friendly sales representatives can be found right next to the entrance of the lobby.

Those who sign-up or are already members of CCHP Health Plan can find

helpful agents just down the lobby, next to Registration desk. Members can get help understanding their benefits, check on claims, pay their premiums or get help with choosing a great new doctor. Be sure to stop by and say hello to everyone!

There are constant activities and improvements to better serve the community. They are all designed to help the community a place where they can go to receive high-quality health care services with convenience.



Community Doctors

東華醫院為社區帶來更方便及貼心的服務

東華醫院新醫務大樓啟用一週年。過去一年，這座擁有最先進儀器的全新設施為無數病人提供一個舒適的治療環境，以促進他們康復。

東華醫院同時也增加其他貼心服務，為社區民眾帶來更多方便。其中一個項目是「健康服務中心」。除了由柏思域街搬至新醫務大樓地庫B1的急症室旁邊，它們還增加了其他服務。它們原本是一個提供疫苗接種及為慢性疾病病人(如糖尿病及乙型肝炎)提供額外協助的地方，現在它們已發展為一間提供一站式及現代化主診醫生服務的診所。華人保健計劃會員及其他病人可以於該處進行年度體檢、測試及其他有關服務。

另一個項目是「華人保健計劃會員服務會員服務中心及營業部」。數年前，他們因重建計劃而遷至柏思域街。現在，他們已重返東華醫院及位於大堂內。華人保健計劃的宗旨是向個人、家庭、各種規模的公司團體及符合聯邦保健資格的居民提供優質及可負擔的保健計劃。華人保健計劃營業部辦事處位於大堂的右邊，他們友善的營業代表能協助社區民眾尋求合適的保健計劃。如果您是華人保健計劃會員，並且對保障、索償、繳付保費及尋找新醫生有疑問，歡迎前往大堂登記處旁邊的會員服務會員服務中心查詢。華人保健計劃的代表，十分樂意為您效勞。

東華醫院不斷改變及進步，致力為社區民眾帶來更方便及更優質的醫療服務。



CCHP Member Services



Department Spotlight: Cardiopulmonary Unit

部門聚焦：心肺治療部

The Cardiopulmonary Unit (CPU) provides various procedures to evaluate heart and lung functions. CPU also offers various services for patients admitted to the hospital with breathing problems or difficulties. In October 2016, the CPU moved to the new patient tower into an expanded area located on the first floor. The department is able to improve privacy and offer additional services to our patients with the new expanded area.

The department is equipped with the latest new technologies and equipment to serve the community. CPU has two rooms available for treadmill testing, where patients will walk on a treadmill to evaluate the heart, new ultrasound devices to capture visual heart motion and pictures, and new pulmonary functions testing equipment that can test lung function and evaluate breathing problems such as asthma or emphysema.

In the past year, we have completed a two year project to have all cardiac testing images and results for patients merged from four separate systems into one electronic record system. Cardiologists are able to access these files to complete reports and view their patient images and results from their offices.

For our inpatients, the CPU is staffed by Respiratory Therapists who assist nurses, physicians and other hospital staff to provide high quality care to patients with breathing problems or to help manage their chronic lung disease. The staff also helps to identify any equipment or needs when patients leave the hospital such as oxygen, breathing medications or equipment.

心肺治療部提供各種評估心肺功能的測試，及為呼吸有困難或問題的住院病人提供各種服務。在2016年10月，心肺治療部遷移至新醫務大樓1樓。新環境更大更寬敞，我們為病人提供更多服務的同時可提高病人的私隱度。

為了進一步服務社區，我們配備了最先進的技術及設備。我們設有兩間跑步機測試室，病人於跑步機上行走便能測試心臟機能。同時，新超聲波設備可觀察心臟跳動及拍下圖片。此外，全新肺功能測試儀器除了測試肺部功能，它還可以評估呼吸問題，如哮喘或肺氣腫。

去年，我們完成為期兩年的系統合併項目。我們成功將所有病人的心臟測試圖像及結果從四個獨立系統合併於一個電子記錄系統內。心臟科醫生能於其辦公室中查閱病人的心肺圖像及測試結果，以完成報告。

住院病人方面，我們的呼吸治療師會協助醫生、護士及其他醫護人員，為有呼吸問題的病人提供優質的護理或治療慢性肺部疾病。我們的醫護人員還會確認病人出院時的設備及需要，如氧氣設備、呼吸藥物或儀器。



Treadmill Test



Pulmonary Test

Chinese Hospital Auxiliary 50th Annual Gala Raising \$22,500 東華醫院輔助會五十週年聯歡晚會，籌得善款二萬二千五百元



50th Anniversary Gala

The Chinese Hospital Auxiliary celebrated a night to remember on September 30, 2017. The 50th Anniversary was no small achievement. Before the establishment of the Auxiliary; women were not formally recognized nor able to advise the hospital on matters of health, and the special needs of women.

To this day, Chinese Hospital remains the first and most beloved charity for all Chinese who came to America. It is a true testimony of the resilience, resourcefulness, and strength of the Chinese community who were denied any medical aid during the period of extreme discrimination against the Chinese. In 1899, the “Tung Wah” Dispensary later evolved into Chinese Hospital in 1925. In 1979 to 2016, the second Chinese Hospital led to the expansion of the New Patient Tower. Today, Chinese Hospital stands so distinctly and unique that there is no other hospital like it. The hospital serves the low-income, non-English speaking immigrants. Chinese Hospital is unique with physicians, nurses and skilled staff whom all speak in the major Chinese dialect.

The Auxiliary is led by the current board of Officer, President Beverly Lee, Chinese American Citizen Alliance Joanna Tom and Rose Chung. A whole new generation of young people stepped up and made the Chinese Hospital Auxiliary Gala a dynamic evening. An endless buffet of favorite food, talented entertainment, a bounty of valuable raffle prizes, dancing to the jazzy Jest Jammin



Check Presentation Event

Band, and the beautiful Miss Asian Global Queen presence made the Gala a delightful evening. If you want to support or volunteer at the Chinese Hospital Auxiliary, please contact 1-415-217-4140.

東華醫院輔助會50年來致力服務社區。該會於9月30日舉行了「東華醫院輔助會五十週年聯歡晚會」。服務社區50年是一個不小的成就。於東華醫院輔助會成立前，婦女的意見從不獲得正式承認，婦女也不能就健康、聽力及特殊需要向醫院提出諮詢。

直至現在，東華醫院仍然最受美國華人歡迎的慈善團體之一。排華法案期間，華人受盡歧視及被剝奪醫療權利，於是他們團結起來對抗。這事能證明華人有百折不撓的精神及機智靈活的應變能力。1899年，東華醫局創立；1925年，東華醫院正式成立；1979年，東華醫院興建第二座大樓；2016年，東華醫院新醫務大樓落成。時至今日，與其他醫院相比，東華醫院是如此與別不同。東華醫院為貧窮或低收入，或不懂英語的移民服務。院內的醫生、護士及員工都能用華語跟病人溝通。

晚會由東華醫院輔助會主席李滿如女仕、同源總會的Joanna Tom及Rose Chung帶領，而年輕的新力軍也為晚會增添活力。當晚精彩活動包括自助餐、才藝表演、大抽獎及Jest Jammin樂隊表演。此外，嘉賓Miss Asian Global Queen的出現令晚會生色不少。欲支持東華醫院輔助會或成為東華醫院輔助會的義工，請致電1-415-217-4140。

Our Efforts to Improve Community Health and Wellness 努力建設健康的社區

Chinese Hospital Wellness Program, launched in 2014, has done a lot to meet the needs of our community. Chinese Hospital Community Health Needs Assessment of 2016 has identified that the community we serve has an increased demand for culturally and linguistically appropriate preventive health and wellness services.

Chinese Hospital Wellness Program offers free on-site health and wellness services to our community partners and their employees and members, including: Chinese Community Health Plan (CCHP), Sing Tao Daily, Tenderloin Neighborhood Development Corporation, Lee Family Association, Yank Sing Restaurant and Cornerstone Academy. Services included health fairs, health screenings, flu shots, massage, and health education. The components of the program were delivered on-site at those organizations to improve convenience, participation and satisfaction. Over 200 people participated in those events in 2017.

Chinese Hospital Wellness Program also offers 18 weekly fitness class series to the community in 3 locations, including Excelsior Health Services, Chinatown YMCA, and Gellert Health Services in Daly City. Classes include traditional Chinese Tai Chi and fitness Qigong, as well as yoga and line dance. Classes are delivered in both Chinese and English. Educational programs are available to community members free of charge, and fitness classes may charge a small fee. Over 200 community members participated in the classes in this year, and the majority of them are underserved Chinese speaking seniors.

In collaboration with Chinese Community Health Resource Center (CCHRC), Chinese Hospital Wellness Program has provided free or low cost culturally and linguistically appropriate health education classes to the community at various locations, including San Francisco Chinatown, Sunset District, Excelsior District and Daly City, on a regular basis. Free health education classes or lectures covering topics like chronic diseases, mental health, disease prevention, healthy lifestyle, traditional Chinese medicine, etc. have been provided to the community in 2017, capturing over 3,000 visits from community participants.



東華醫院社區健康需求評估顯示，我們服務的社區對文化及語言上適切的預防及健康服務之需求有增加趨勢。因此，東華醫院於2014年推出東華醫院保健項目，以滿足社區的需要。

東華醫院保健項目為我們的社區合作夥伴、其員工及會員提供免費現場健康及保健服務。合作過的夥伴包括華人保健計劃 (CCHP)、星島日報、Tenderloin Neighborhood Development Corporation、李氏敦宗總公所、羊城茶室及Cornerstone Academy；而提供的服務包括健康展覽、健康檢查、流感疫苗注射、按摩服務及健康教育等。此服務旨在提供更方便、更容易及更令人滿意的現場服務給我們的社區合作夥伴。於2017年，此項目為超過200人提供服務。

此外，東華醫院保健項目每周有18班健身課程，上課地點遍佈3個不同的社區，包括外米慎區、華埠青年會及帝利市的Gellert華康醫務中心。課程以華語或英語進行，課程包括傳統太極班、健身氣功班、瑜珈班及廣場舞班等。教育課程對社區會員免費開放，而健身課程可能會收取基本費用。2017年綜合各課程的參加人數超過200名，其中大部分參加者是不懂英語的弱勢長者。

藉著與華人社區健康資源中心 (CCHRC) 合作，東華醫院保健項目可把文化及語言上適切，且免費或價格相宜的健康教育課程帶到各社區，地點包括三藩市華埠、日落區、外米慎區及帝利市。我們於2017年提供了慢性疾病、心理健康、疾病預防、健康生活方式及傳統中醫等的免費健康教育課程。本項目吸引了超過3,000人次的參與。

Congratulations to Jade Health Care Medical Group on its 1st Anniversary! 恭賀「翡翠東華醫師協會」成立1週年！

Jade Health Care Medical Group (Jade) is an important part of Chinese Hospital Health System. Chinese Hospital Health System is an integrated delivery system that comprises of Chinese Hospital & Clinics, CCHP and Jade (medical services, health plan and medical group), working seamlessly together to provide the community with quality, affordable care that is culturally sensitive and linguistically appropriate.



Dr. Weiwen Zheng has had a private practice in San Francisco for over 12 years, and was one of the first community doctors to join Jade. Prior to that, she served as a volunteer interpreter in a major hospital in San Francisco. She witnessed how panic-stricken and helpless Chinese patients felt when visiting their doctors in American society, which she felt was due to language barriers. On one occasion, she visited Chinese Hospital emergency room to accompany a senior for a physical exam and inpatient admission procedures. She was amazed that throughout the whole process, the interaction between the doctor and patient was conducted in Chinese. She had a unique impression of Chinese Hospital when comparing it with other mainstream hospitals. Chinese Hospital's staff could communicate using the language that patients are familiar with, thereby reducing their anxiety. This experience left such an impression on Dr. Zheng, that it led her to her start her practice in the medical field. In 2005, she decided to move back to San Francisco from Nevada to serve the Chinese community. When it was established last year, Dr. Zheng proudly and immediately joined Jade, and assisted them in launching the entire integrated medical system.

After joining Jade, Dr. Zheng often heard patients referring to Jade as heartwarming. They are glad that they could use the language they are familiar with for their entire treatment process. Dr. Zheng is convinced that a

doctor's mission is to provide the best possible service to patients to help reduce their anxiety. While celebrating Jade Health Care Medical Group's first anniversary, Dr. Zheng appeals to doctors who have not joined Jade yet to collaborate and serve the Chinese community together.

For more info on Jade Health Care Medical Group and its providers, please contact Jade:

170 Columbus Ave, Suite 368, San Francisco, CA 94133
www.JadeHCMG.com • Info@JadeHCMG.com
1-415-677-2408

翡翠東華醫師協會是東華醫院綜合醫療體系中很重要的一部分。東華醫院醫療體系由東華醫院、華人保健計劃及翡翠東華醫師協會攜手組成，並集醫療服務、醫療保險及醫生團體於一體，共同為社區提供一個方便、合適及周全的社區醫療體系。

鄭衛文醫生是首批加入翡翠東華醫師協會的社區醫生，她於三藩市私人執業超過12年。鄭醫生曾在三藩市主流醫院裡擔任義務翻譯員，她看到華人於美國社會求診時因語言障礙而感到驚惶失措及徬徨無助。某一天，她陪一位老人家去看病，並來到東華醫院急症室接受檢查及辦理入院手續。整個過程也使用華語進行讓鄭醫生感到十分驚訝，她覺得東華醫院跟其他主流醫院很不同，醫院裡的員工都能使用病人熟悉的語言進行溝通，從而減低病人的不安及焦慮。鄭醫生一直記掛此事，並不忘初心。於2005年她決定由內華達州搬回三藩市執業，以服務華人社區。去年東華醫院成立翡翠東華醫師協會後，鄭醫生亦第一時間加入，並藉此協助翡翠東華醫師協會把整個綜合醫療體系啟動起來。

加入後，很多病人對鄭醫生表示，翡翠東華醫師協會最令他們感到溫暖的地方是整個治療過程都能使用他們熟悉的語言進行。鄭醫生亦深信作為一位醫生的宗旨是在病人徬徨時為他們帶來最好的服務。鄭衛文醫生恭賀翡翠東華醫師協會成立1週年的同時，也呼籲還未加入的醫生踴躍參加，以共同服務華人社區。

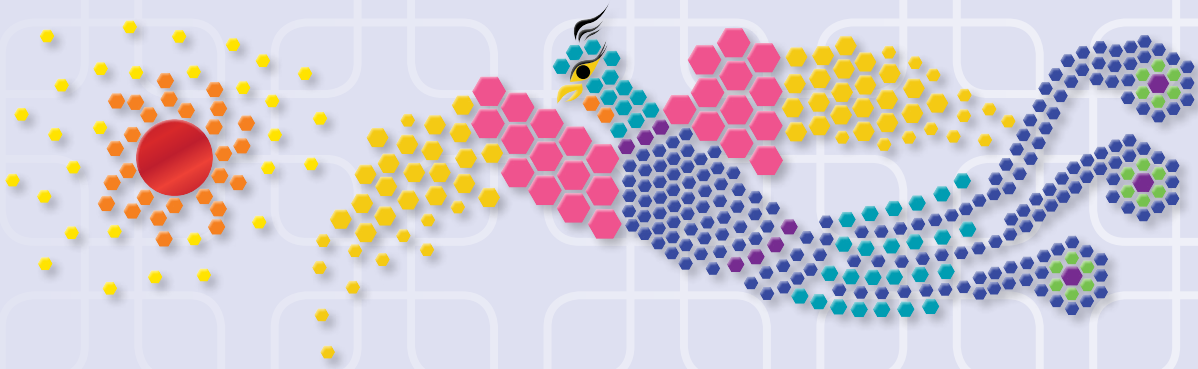
想了解更多翡翠東華醫師協會及其醫生成員的資訊，可與翡翠東華醫師協會聯絡。

170 Columbus Ave, Suite 368, San Francisco, CA 94133
www.JadeHCMG.com • Info@JadeHCMG.com
1-415-677-2408

Reserve a Phoenix Tile Today! 立即認購火鳳凰慈善磚！

Thank you to all who have supported and helped sponsor our phoenix tile program! With your help, the phoenix tiles are about 80% sold, and we are asking our generous donors to sponsor our \$5,000 to \$25,000 level tiles. The donations from this program will be used to renovate the Chinese Hospital 1979 Building Renovation Project which is adjacent to the new patient tower. Please act now and buy your phoenix tile. When all tiles are sold, we will begin the installation of the phoenix which will be there for another 100 years.

萬分感謝各界善長人翁對東華醫院火鳳凰籌款活動的鼎力支持及慷慨捐助。慈善磚推出以來獲得廣大支持，至今已售出超過8成，餘下的慈善磚由\$5,000至\$25,000不等。是次活動所籌得的善款，將用於翻新與新醫務大樓相連的1979年大樓。慈善磚於售罄後便會開始安裝於本院外牆。慈善磚可作紀念親人之用或作公司扣稅，一舉兩得。行善積德，福有悠歸，請立即行動，認購慈善磚以支持東華醫院。



For more information on the Phoenix Tile, please call 1-415-677-2470.
查詢有關火鳳凰慈善磚詳情，請致電 1-415-677-2470。

2017 Radiothon Highlights 「愛心獻東華」電台籌款回顧

As our May 10, 2017 Radiothon has come to a conclusion, we would like to thank everyone who has supported Chinese Hospital in another successful year of fundraising. A total of 340 individuals donated to the Radiothon raising a total of \$325,282. Funds raised will be used to renovate our 1979 building. We hope that we can have your continued support.

2017年度的「愛心獻東華」電台籌款已於5月10日圓滿結束，承蒙各界善長熱心捐助，是次活動獲得空前成功。「愛心獻東華」電台籌款今年共有340位善長人翁參與，活動成功為東華醫院籌得\$325,282元，以支持東華醫院1979大樓翻新工程。我們感謝各善長一直以來的支持，亦希望各界往後繼續支持東華醫院，讓我們繼續為社區服務。



Chinese Hospital 1979 Building Renovation Project

東華醫院 1979 大樓翻新工程

To meet the growing demand for healthcare services, a renovation project is planned for Chinese Hospital 1979 building. The building is next to the newly built patient tower and houses the current lobby and registration. The project includes facility upgrades and renovation to several services area throughout the 1979 building, including lobby, laboratory and kitchen. Following the renovation, we can provide a better environment for patients, visitors and employees.

The kitchen was built in 1979 and designed to serve the hospital's 54-bed capacity. The hospital has expanded to 88 beds in 2016, but the kitchen remained virtually unchanged. In order to meet the needs of the expanded hospital with the additional 23-bed skilled nursing unit, the hospital will renovate kitchen and cafeteria. The kitchen renovation project will take place on the third floor of the 1979 building while the existing kitchen stays in operation until the project is completed. This renovation will almost double the hospital's kitchen size and provide a state-of-the-art facility where dietary personnel will prepare about 400 meals daily for inpatients, employees, physicians, and visitors.

The laboratory will be expanded and redesigned to accommodate the needs of our patients. There will be a larger waiting area and more blood draw stations. Also, the internal laboratory technical areas will be remodeled to facilitate the growing testing volumes, enabling a more efficient workflow. Most importantly, it will have a direct positive impact on our patient care and experience in the state of the art clinical laboratory.

In conclusion, the renovation project will make Chinese Hospital more convenient, comfortable and attractive for patients, visitors and employees. We are seeking donations to fund these changes. Please give us your support for our work for the community!

For ways to donate, please contact Department of Fund Development at 1-415-677-2470.

隨著醫療服務的需求增加，座落於新醫務大樓旁邊的1979大樓計劃進行一系列翻新工程，以進一步提升服務質素。此工程將翻新及提升數個於1979大樓內的服務地點，包括大堂、化驗部及廚房（營養膳食部）。工程完成後，我們能為病人、訪客及員工提供更優質的環境。

現有的廚房建於1979年，旨在為醫院的54個床位服務。2016年，醫院床位增加至88個，但廚房則維持不變。為配合醫院重建及新增設的23個康復治療部床位，本院將重新裝備廚房及飯堂。廚房翻新工程將於1979年大樓3樓進行，工程進行期間現有的廚房會維持正常運作。工程完成後，廚房面積將擴大近一倍，並採用先進的設備令每日的膳食生產量增加至400份，以服務病人、訪客及員工。

本院亦將重新設計及擴大現有的化驗部。現時的候診區將進行翻新，內部亦會增設多個抽血站。此外，內部實驗室將重新改建，以適應日益增長的需求及提高工作效率。此工程將進一步提升化驗部的服務水平，並且帶來積極的影響，使化驗部的服務更流暢及更有效率。

此翻新工程的目的是讓東華醫院為病人、訪客及員工帶來更方便、更舒適及更有吸引力的服務。我們現正籌募經費以完成此龐大翻新工程。請支持我們，共同為社區出一分力！

想了解更多捐款資訊，請聯絡基金發展部，電話 1-415-677-2470。



Thanks to our generous donors who contributed from August 2016 to July 2017

\$100,000 & Above

Chinese Community Health Plan
Hong Kong Kai Chong Tong
Man Kong Lee

\$50,000 - \$99,999

Anonymous
Network Medical Management Inc.
PG&E
The San Francisco Foundation

\$25,000 - \$49,999

Barbara Patricia Chow
Chung Chou City, Inc. #3
FivePoint
Mr. & Mrs. Glenn Fong
Sue Fong
Ouiling Liao Hu
Malcolm Lee
Dominique Lien
Loving Hut Vegan World, Inc.
Uber Technologies, Inc.

\$10,000 - \$24,999

AECOM / Parsons Joint Venture
Airbnb, Inc.
Bank of The Orient
The Honorable Willie L. Brown Jr.
Carollo Engineers, Inc.
Cerner Corporation
Bak & Betty Chan
Edward Y.C. Chan, M.D.
Charles Pankow Builders
Chinese Chamber of Commerce
Comcast
DPR Construction, Inc.
Construction Testing Services
DeSilva Gates Construction, LP
FMU Charitable Foundation
G.F. Bunting + Co
Arthur J. Gallagher & Co.
Good Hope Seeders
Graton Resort & Casino
Hill Physicians Medical Group
Gustin M. Ho, M.D.
Ironshore Management Inc.
Ivan Woo Living Trust
Huan Zhi Kuang & Qiao Mei Fang
Eleanor Lee

Anthony Leong
Raymond K. Li, M.D.
Lucky Chances, Inc.
Lui Foundation
Macerich
Robert McKeown
MEI Architects
Phillips 66/76
Daniel Poon
Race Communications
Recology
Robert Joseph Louie Memorial Fund
San Francisco Health Plan
Silverado Contractors, Inc.
Sutter Health - CPMC
The Lu Foundation
The Stinnett Group, LLP
The Warren Tong Revocable Trust
Hoa & Than Tran
Veritas Investments
Webcor Builders
Ed Wong & Family

\$5,000 - \$9,999

Academy of Art University
Alexandria Real Estate Equities Inc.
Anonymous
BCCI Construction Company
Bosch Software Innovations Corporation
Brown and Caldwell
Bok Keung Chan
Eddie Y. Chin
Mua Hong Chin
Corporate Security Service, Inc.
Cushman & Wakefield
Dignity Health
Dodge & Cox
Eco Bay Services, Inc.
Lynette Eng
Forest City
Daniel & Ellen Gee
Golden Gate Radiology Medical Group, Inc.
Paul Hastings
HDR Engineering, Inc.
HMS Associates
Hollins Consulting, Inc.
J & M Lam Family Foundation
Herbert Jeong
Jesy Foundation
May Jew & Larry Jew, M.D.
John A. Martin &

Associates, Inc.
Edward Ko, M.D.
Manling Koo
Jeffrey La
Laborers' Local 261
Johnson & Mabel Lam
Johnson Lam
Vincent & Dianne Lam and Eric & Vivian Chen
Kit Ngar Lee
Stella & Denny Lee
Tzu Chen Lee
Vincent & Sylvia Lee
Lescure Company, Inc.
Linda Lew
Julia Ling
LK Equipment & Co.
Yoke Mo
Montgomery Corporation
Richard Ng
Noyola Consulting, LLC
Muriel Ong
Peterson Power Systems
Ranger Pipelines, Inc.
Theodore and Doris Lee Family Foundation
Ronald Tong
Helen Hoa My Tran
Phung Tran
Triple Good Foundation
Triple Leaf Tea, Inc.
Chan Shuk Wan
Linda O. Wang
Erwin Wong
Vincent Wong
Brenda Yee
Katherine Zhang & Michael Liang
Lawrence Zhang
Weiwen Zheng, M.D.
黃秋月

\$1,000 - \$4,999

Acco Engineered Systems
Anonymous
Anvil Builders, Inc.
Arcadis
Asian American Culture Infinity Foundation
Asian Community Mental Health Services
Kenneth Au
Bay Area Medical Academy
Jeffrey Better
Bizon Group Inc.
C.M. Capital Corporation
Karen Cai
CC & Sandy Yee Foundation

Central Concrete Supply Co., Inc.
Gaywynn & Lorraine Chan
Kamee & Stephen Chan
Lydia Mahr-Chan
Peter & Carol Chan
Shuk Wa Chan
Siu Mui Yung-Chan
Stanley Chan
Te Ning Chang, M.D.
Fiona Y. Chen
Jessica Chen
Kelly Chen
Polly P. Chen
Kwan & Hang Cheung
Sunny Cheung
Marilyn & Henry Chew
Alfred & Katherine Chin
Benson Chin
Matilde Chin
Wen Ling Chin
James Chow
Mary Chow
Sam Chu
City Motor Sales
City Super
Peggy Cmiel
Del Monte Electric Co., Inc.
Eastrend Enterprises, Inc.
ENGEO
F.W. Associates, Inc.
Harry Fong
Stuart Fong
Bernice Wong Gabriel
Gee Sue Duck Association
Golden Gate Pharmacy
Billy Gong
Susan Lee Gong
Ping Guan
Haas & Najarian, LLP
Carol A. Ho
Edwina Ho
Eva Ho
Daisy Hom
Fred Hom, M.D.
Patricia Hom
Hooper, Lundy & Bookman, P.C.
Hospice By the Bay
Cindy Hsiao
Lily L. Hua
Vernon Li Chao Huang
Maggie Huang-Zhou
Ann Suk Yee Hui & Pui Wing Hui
Wanda Hui
J&K Trading
Jacobs Engineering Foun-

ation
Jedemi Investors
Rhonda & Jonathan Jew
Mr. & Mrs. William Joe
Debbie Jue
Kennedy Event Marketing
Quor Kong
Grace Kwong
Tony Kwong and Shaw Kim Lee
Betty Lai
Wing Lai
Kory Lam
Shirley Lam
Suk Y. Lam
Mark Lancaster
Lauson LLC
Lisa Law, M.D.
Beatrice Lee
Christina Lee
Eelee Lee
Helen & Larry Lee
Jason Lee
Jennie & Andrew Lee
Karen Lee
Milton Lee
Mimi Lee
Morris Lee
Paul Jan Lee
Rita and Stanley Lee
Wai Ling Lee
Yoke Ming Lee
Leon Family
Andrew S. Leong
Wai K. Leong
Polly Leung
Oy Yee Lam Lew
Parkman Lew
Anna Li
Elvina Li
Wanna Li
Zhen Zhen Li
Henry Liang
Cynthia Lim
Lim Family Benevolent Society
Chih Kong Liu
Edwin Liu
Siu Fong Liu
Jeffrey Lo
William Lock
Lawrence W.S. Loo
Lucky Creation Vegetarian Restaurant
Jocelyn Luk
Yim Luk
Evangeline & Hampson Lum
Patricia Lum

衷心感謝2016年8月至2017年7月慷慨捐助的機構及個人

Chung Mak	Lucille Tang	Bing Kong Tong Benevolent Association	Howard Doe	YiJun Huang
Denise Mak	Taoist Association of America	John Burton	Wayne Dong	Yuyan Huang
Salina Man	Terraphase Engineering, Inc.	Run Feng Cai & Jin Yun Lin Family	Annie Donmon	Amy Y. Hui
Mazzetti Inc.	The Gee Family Trust	Kevin D. Casey	Jian Rong Du	Jew & Jew Medical Associates
John Mock	The Olympic Club	Bill & Sandy Chan	Duck Sin Benevolent Association	Kevin & Winnie Mok Charitable Fund
William S. Mock	The Lee Family Trust	Chi Yin Chan	Vincent Duong & Family	Kin's Kitchen Cabinets, LLC
Julina Moy	Shun Mei Tom	Ching Yee Chan	East West Bank	Mabel Kong
Magdalen Mui	Clay Tominaga	Clement Chan	Anderson Eng, D.O.	Kong Chow Benevolent Association
Netronix Integration	Tomokazu Japanese Cuisine (SFO) Inc.	Coty Y. Chan	Clara Eng	Chuey Kotake
Bernice Ng	Toan Ton	Julia Chan	Gerald Eng	Kow Kong Benevolent Association
Betty and Henry Ng	Thomas Toy	Kwong Hung Chan	Far East Café	Isabella Ku
Daniel W. Ng, PhD	Edmund Tran	Norma Chan	Far Yuen Chong Sen Benevolent Association	Miranda & Ken Kung
Darren Ng	Amy & Stephen Tsui	Peggy Chan	Fehr & Peers	Wilson C. Kuo
Evelyn Ng	Mary Tsui	Sau Chun Chan	First Impression of Belmont Inc.	Kuomintang
Elliot Nipomnick, M.D.	Vincent Vou	Wing On Chan	Albert & Alice Fong	Winnie Kuong
Oakhill Gateway Partners, LP	Lily Cuili Wang	Yuet Ying Chan	Arthur Fong	Alice Kwan
One Work Place	Wells Fargo Foundation	William & Anita Chang	Daniel & Melinda Fong	Kwan Insurance Services
Pacific Waterfront Partners, LLC	Wipfli/HFS Consultants	Eric Chau	David Fong, D.P.M.	Jade Hon Yun Kwong
Plumbing Products Group Inc.	Louise Won	Mien Chau	Jimmy Fong	Jeffrey & Susie Lai
Fay Pon & Family	David Wong	Nghiep Chau	Linda Fong	Lai M. Lai
Portsmouth Plaza Parking Corporation	Ed & Eva Wong	Wendy Chau	Vernon K. Fong, M.D.	Teresa S Lai
Prime Residential Advisor, LLC	Eric H. Wong	Winnie Chau	Fook Chong Hong Friendly Society	Chun Kwai Lam & Sae Heng Noo
Rose T.Y. Chen	K.Y. Wong	Danyan Chen	Fox Benefits Inc.	David Yiu Sing Lam
Administrative Trust	Mabel B. Wong	Shaoyou Chen	Christopher Freye, M.D.	Kee & Mable Lam
San Francisco Lee Federal Credit Union	Maye Christina Wong	Sze Yih Chen	Lucky Fung	Khai Quang Lam
Elisa Santos	Pausang Wong	Xiu Zhen Chen	Gee Tuck Sam Tuck Association	Pui Ying Lam
SEIU United Healthcare Workers	Peter Wong	Ya Lien & Mu Na Chen	Gellert Health Clinics	Tung Lam
Johnson Seto	Raymond Wong	Yan Na Chen	Gin Sun Hall Benevolent Association	Chau Shu Lau
Judy Seto	Ruby Lee Wong	Yu Z. Chen	Scott Goodin	Gloria Lau
SFCH Pathology	Sherman Wong	Judy Cheng	Erwen Guan	Ken Lau
Rong Shen, M.D.	Tom C. Wong	Wellson Cheung	Yet Oi Chiu Guo	Sanford Lau
Diane & Doreen Shew	Wah-Sai & Sheung Ngor Ng Wong	William Cheung	Cherng Han	Thomas & Winnie Lau
Sweader & Teresa Shih	Wayne & Jenny Wong	Simon Chew	Han Xing He	Phan Le
Amy Shum	Yi Tung Wong	Chinese American Citizens Alliance	Healthcare Design Solutions Inc.	Angela Lee
Jack Sit	George Woo	Chinese Consolidated Benevolent Association	Maxine V. Hickman	Haidee Lee
Wing Yau Go Siu	Gina Yam	A.B. Chinn	Patrick Higgins	Heidi L Lee
Yuey & Siu Lan Siu	Alpha Yee	Victor Chinn	Dora Ho	Hoi Lam Lee
SJ Engineers, Inc.	Betsy Yee	YoungSoo Cho	Fung Ling Ho	Isabella & Kui Lee
Skanska USA Building, Inc.	Lawrence Yee	Larry Chong, M.D.	Jenny Ho	Jason Lee
Marcia Smolens	Linda Tong Yee	Eugene Chow	Rebecca Ho	Man Wai Chiu Lee
Christopher So	Victor Yeung	Kienn Chow	Gee M. Hom	Suit Yee Lee
Suey Wing Benevolent Association	Ka Ki Yip	Man Chow & Shuk Ming Kong	Hometown Grocery	Yolanda Lee
Lily Sun	Ella & Henry Young	Raymond Chow	Hop Wo Benevolent Association	Yuke Yan Lee
Rebecca Takahashi	Harry & Hanna Yuen	Yap Choy	Hoy Sun Ning Yung Benevolent Association	Jonathan Leong
Debbie Tam	Tasha Yuen	Chun S. Chu	Feng Ling Huang	Fung K. Leung
Raymond Tam	Wai Yung Yuen	Jason & Shirley Chu	Jieyi Huang	Mei Yung Leung
Wai Chuck Tam	German Zhao	Suk Ping Chu	Li Yi Huang	Michael Lew
Victoria Tam	中山大環同鄉會	William & Daisy Chu	Man Yu Huang	Calvin Ruicong Li
Yick & Helena Tam	\$100 - \$999	Chan Chung	Scott L. Huang, D.O.	Mei Kai Li
Scott Chan & Jamie Tan	Altman & Cronin Benefit Consultants, LLC	Kam Chung	Xiu F. Huang	Oi Ling Li
Tammy Tan	Angelica Corporation	Patricia Chung		Stephy Jing Liang
	Anonymous	Colour Studio, Inc.		Yao Rong Liang
	Ben Young & Family	Core Financial Services		

Yu Hua Liang	Mithun /Solomon	Franklin Quon	Tak Tsui	Min Ling Ye
Thomas Lieb	Cheong Moh	Kimmie Quon	Christine Tu	Chung Yen Yee
Johnson Lim	Victor Moye	Quong Ming B & T Society	Raymond Vong	Yee Fung Toy Family Association
Xiao Wen Angie Lin	Nam Ping Benevolent Association	Avik Raichoudri	Lam Sau Wan & Wen Hung Wan	Gary Yen
Candy Liu	New Asia Restaurant	Chao Xiong Ruan	Fusheng Wang, M.D.	Sau Kwan Tong Ying
Guo Niu Liu	Anthony & Stella Ng	Sam Yick Ben Assn Inc Western USA	Baldwin Bo Yin Wong	Alice Yip
Yifa Liu	Connie Ng	Pui Chau Seto	Bill Wong & Associates, Inc.	Wai Ching S. Yip
Chi Lo	Coral Ng	Job Shem	Cally Wong	Yeeman May Chui Young
Siong Koon Lou	Erika Ng	Doreen Shew	Erika Wong	Young Community Developers, Inc.
Alfred M. Louie	Leung Fa Ng	Peter Simpson	Gim To Wong	Man Tat Yu
Calvin Louie	Winson & Nancy Ngai	Xiu Ling Situ	Karl Wong Insurance	Shek Hing Yu
Harvey Louie	Le Thu Nguyen	Sam & Gar Yee Siu	Kwok Leung Wong	Ellen Yuen
Hing Louie	David Nhin	Sonya Suk Han Soder	Maise Wong	Ru Sen Zhao
Lai King Louie	Nia Inc.	Sue Hing Benevolent Association	Mei San Wong	Si Hong Zhao
John & Mei Y Low	Num Hung Hok Luk Assn	Greg Suhr	Peggy Wong	Shi Qiang Zhou
Jenny Lu	May Oong	Donald & Susana Szeto	Robert & Wai-Sin Wong	Zhuo Zhan Zhu
Kam T. Lui	Donna D Ouyang	Taipei Economic And Cultural Office	Robin Wong Physical Therapy	關振鵬, 彭莉嘉, 關昊仁
Patty Lum	Julyana Pak	Patrick Tam	Siu May Wong	三寶弟子
Steven Lum	Chuck Pang, M.D.	Judy Zhen Zhen Tan	Edward & Ka Yip Woo	陳春蘭
Vincent Lum	Rebecca Pavone	Junhua Tan	Judy Woo & Alvin Ja	雷麗冰
Yu Yan Luo	Hoi Kwan Pong & Hang Mak	Karen Tang	Vency Woo	譚錦榮合家
Hung Van Luu & Family	Cheng Yao Qiu	Mrs. Tang	Hon Ming Wu	趙美意合家
Teresa Ma	Elise Qiu	Ka Chun To	Wing Wu	劉時嬌
Anna Tsang Mac	Angela Quan	Joseph Trefz	Sumei Xu	呂汎欣
Ying Ki Mak & Kam Wah Li	Daniel Quan	Han Yuk Tsang	Yan Wo Benevolent Association	鄭兆倫, 王惠琴, 鄭友倫
Michelle Malone	Collin P. Quock, M.D.			
Keith Minard	Benjamin Quon			
Ming Yee Kee Loo				

Tribute Gifts – August 2016 to July 2017

In Honor of 表揚捐款:

The Chau's Tammy Chau	The Lui's Wedding Anonymous	Ancilla Kwok	Simon & Clara Tam	Wai C. Wan Michael Ng
Irwin Chow, M.D. Randy Zechman	Brent & Janice Assink	Sharon & Joseph Kwok	Tony Tam	Chuan Chuan Wang & Chiao Chen Andy Wang
Karen Chow Randy Zechman	Eddie & Susana Au	David & Grace Lam	Henry Chee Tan	Chi Sun Wong Lai Ching Wong
Angela Hall Helen & Dan Sheehan	Anthony & Margaret Carter	Eppie Lam	Katrina C. Tang, M.D.	Lun Shing Wong Lai Ching Wong
Drs. Edward Ko, Gustin Ho, Robert Choy, Shiu Kwok, & Robert Hoang Ta Kon Lee	Irish S. Chan & Michael Chan, M.D.	Peter & Mei Lam	Garret & Anita Tom	Franklin & Frances Wu Lawrence Smyle
Victorio Lee Lai Ching Wong	Matthew Chan	Victoria Law	Cecilia Tse & Dominic Tse, M.D.	Yessie Yip Ellen & Gregory Mendiola
Wei Wen Li Victorio Li	Patrick & Julia Chan	Captain & Mrs. David Lazar	Lydia Wen	
Victorio Li Lai Ching Wong	Claudine Cheng	Philip & Carlene Lee	Christin Wong	
Chung Wo Louie Les Louie	Claudine Cheng	Phyllis Lee	Doug Wong & Pearl Yee	
	Ken Ping & Emily Cheng	Theodore and Doris Lee Family Foundation	Eric Wong	
	Fanny Chiu	Linda Lei	Jules & Shirley Wong	
	Leo & Noreen Chiu	Julia Ling	Maise Wong	
	Po Chue Betty Tam Chiu	Annie Liu & Gary Wong	Ringo Wong	
	Anna Chong	Sylvia & Johnny Loh	Barbara & Jackie Yee	
	Simon & Eileen Chow	H. Lu & S. Yang	Malcolm Yeung & Suosdey Penn	
	Chowchilla Ranch, Inc.	Koji Oka	Teresa Yeung	
	Cordelia Eng & James Ng	Rose Pak	Ella & Henry Young	
	Ying Fan	Peter & Susanna Pau	Pigang & Hugh Zeng	
	Sakurako & William Fisher	Lulu & Sharif Rumjahn	Katherine Zhang	
	David Gockley	Elaine Shen	Alexander Meau Constantin Delivanis	
	Conrad Huang & Hsiu-Yi Hsiao	Drs. Ben & A. Jess Shenson	Sau Chun Ng Lai Ching Wong	
	Betty Huang	Francis So		
	Tom Hui	Shirley Soong		
	William & Dolores Joe	Yvonne Sun & Patrick Lao		
	Wing K. King, M.D.	Eleanor Szeto		

In Memory of 紀念捐款:

張全忠
Moon Yu Chan 陳滿

Frank Bieniosek
Angeline O. Wong

Chi Ying Chang
Joanne H.C. Wang

Li Jean Chen
Polly Chen

So Lau Cheng
Marian Yee

Danny Chow
Annette Chow

Stephen Chow, M.D.
Dr. & Mrs. Edward A. Chow

May & Leland Dea
Diana Louie

Wong Koon Fee
Warren Wong Leong

Charles N.M. & May Y.Y. Fong
John E. & Maedell F. Stafford

Ngook Sin Fong
Jennie Fong
Joyce Fong

Julie Gong 江嚴鳳齊
The Gong Family
Monita Lee
Vincent Lin
Leslie Quan
Melissa Quan
Petersen Precision Staffs

Elaine Ho
Anonymous

Carl & Mabel Hong
Peter Hong

Phyllis F. Hong
Violet Yip

Oilan How
Vicky Chan
Sharon Fong
Stephen Herman
Helen Smith Hill
May Jew
Gary Ow-Yang
Siu Mamie How Oweyeung
Simon & Theo Teng

May W. Ja
Gary & Carol Chin
Joanne Ja
Richard & Patsy Ja
Ronald & Rebecca Ja
Pauline Lee
Gordon Seid
Lai Sim Szeto

Jeanette & Werner Yee
Linda Seto Yee
Shirley Yee

Lam Wing Kan
Julia Ling

Sook Chun Lau
Henry Liang

Ed Lau
Daniel S. Wong

Sook Chun Lau
Henry Liang

Fay Ying Lee
Judy Seto
Mabel Seto
George Woo

Fred J.F. Lee
Jean K. Lee

Richard S. Lee
Dennis Y. Wong

Stephen Q.C. Lee
Fred & Carol Chan
Henry Chin
Clifford & Lily Dong
Lois Fong-Sakai
James K. Ho
Mary Jankowski
Richard & Shirley Kwan
Ben & Alice Lee
Lucy Lee
The Lee Family Trust
Millie & Eugene Lew
Harvey Louie
Chew & Evelyn Low
Michael Ong
Peggy P. Ong
Sung Choe & Elaine K. Ong
Yvonne Ong
Charles & Joan Sung
Yick & Helena Tam
Elisa K. & Tony Tong
Katherine Wong
Sidney & Marjorie Y. Wong

Stanley Lee
Peggy P. Ong
Yvonne Ong

Jayne C. Leon
Julia Ling
Jeffrey Low

Kim Leon
The Leon Family

Hon Ying Leung
Pui Yee Chan

Willie S. Lew
Po S. Lew

Elaine Louie
George J. Lee

Moon Fay Louie
Les Louie

Drs. Serene & Ronald Low
Kenneth & Elaine Chew
Arnold & Junko Low

Alice T.Y. Man
Maria Lai Wong

Siu Sim Mark
Marshall & Mary Small

Rose Pak
Elaine Chan
Dr. & Mrs. Edward A. Chow
Serene Chan Chua
Thomas Harlan
May & Larry Jew, M.D.
David Luo
Maise Wong

Suey Hall Pon
Fay Pon & Family

Nancy Quan
Tim Quan

Mabel Seto
Gilbert Y. Jay
Atea Koon
Emily Kwan
Linda Lee
Julia Ling
Judy Seto
Carolyn & Albert Woo
Marva Yem

Amelia Siu
Merry Weeks

Donald Sullivan
Dr. & Mrs. Edward A. Chow

Kwok Tam
Joseph & Luella Hom

Gilbert Won, M.D.
Louise Won

Jim & Nanette Won
Sarah J. Won

Larry Wong
Louise Chan Won

Maria Lai Wong
Stanley & Helen Chew
Melissa & Glen Gee
Evelyn Hom
Linda Hwang
Brad & Sandra Jarvinen
Mary Lam
Frances Leung
Fred & Lena Loo
Clifford Ong

Joycelyn Ong
The Quon Family
Wellman & Millie Tsang
Jenny & Jackie Wong
Jannie & Benny Wong
Timothy Wong
Willie & Berline Wong
Randall Young

William Woo
Jew & Jew Medical
Associates
May & Larry Jew,
Valerie Ho-Jew
Jonathan Jew &
Rhonda Cynthia Jew

Xiao Chan Wu
Mandy M. Wu

Brain Yee
David & Lun-See Chan
Kenneth & Cindy Szeto
Dennis & Marsha Soohoo,
Samuel & Camille Chan,
Chun & Kathy Wong, &
Deborah Wong
Calvin Szeto, Ronald Szeto,
Anh Ha & Sally Szeto

Joseph Yew Sr.
Deirdre Moy

Weyu Zhang
Dr. and Mrs.
Edward A. Chow
James K. Ho
Scott Huang, D.O.
Julia Ling
Salina Man
Angie Tam
Brenda Yee

Dejian Zhen
Lisa Tan & Raymond Liu
Scott Chan & Jamie Tan



Chinese Hospital Association

845 JACKSON STREET
SAN FRANCISCO, CA 94133
1-415-982-2400
WWW.CHINESEHOSPITAL-SF.ORG

NONPROFIT ORG
US POSTAGE PAID
SAN FRANCISCO, CA
PERMIT 487

Chinese Hospital's 23rd Annual Golf Tournament 第23屆慈善高爾夫球賽

On Columbus Day, October 9, 2017, 224 golfers showed up at the Olympic Club for Chinese Hospital's 23rd Annual Golf Tournament. As the golfers arrived at the Olympic Club with its magnificent lake and ocean golf courses, the excitement for the day continued to build. Two stunning Tesla cars were on display at the front of the clubhouse, waiting for one lucky closest to pin winner to drive the Tesla Model S or X home for a weekend. Golfers were excited to start, and it took no time before the competition started heating up. Participants enjoyed the hybrid delicacy of the "Burger Dog" for lunch generously sponsored by The Stinnett Group and John A. Martin & Associates.

After the tournament, golfers made their way into the Garden Court, to enjoy cocktail hour, silent auction, and a wine raffle. The awards dinner banquet room quickly filled with over 220 guests. Thanks to Mayor Willie L. Brown Jr. and Supervisor Aaron Peskin who conducted a lively and entertaining live auction.

The event was a success raising over \$630,000. The success of the event is because of the generosity and participation of our event sponsors, golfers, and planning committee.

東華醫院「第23屆慈善高爾夫球賽」已於10月9日(哥倫布日)假三藩市Olympic Club順利舉行。當日，兩台風靡全球的Tesla電動車停泊於俱樂部門前，等待著一位幸運贏家駕駛Model S或Model X回家渡過一個週末。在晴朗的天氣下，各高球愛好者急不及待乘坐高球車向風景秀麗的海洋球場及湖景球場出發比賽。下午，他們還可享用由贊助商The Stinnett Group and John A. Martin & Associates提供的美味Burger Dog午餐。

比賽完成後，各參賽者回到Garden Court享用由大會準備的雞尾酒會、無聲拍賣、葡萄酒抽獎及晚宴。該晚的現場拍賣由嘉賓前市長布朗及第3區市參事佩斯金親自主持，現場反應熱烈及於一片熱鬧氣氛下結束。

在此特別感謝一眾贊助商、參賽者及籌款委員會成員。是次活動獲224人出席，成功為東華醫院籌得超過63萬元。